



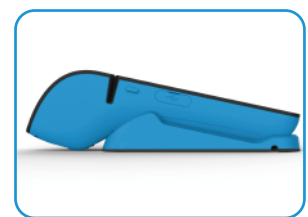
WISEASY P3 FP

Android EMV POS with Fingerprint Module



Product Introduction

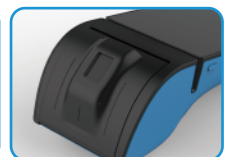
- Integration of NFC, bluetooth (BLE), sound wave sensing and high-speed thermal printer
- Waterproof, dustproof and drop-proof screen which has passed 1m drop test
- WIFI, 3G and 4G modules are adopted to build powerful networking capability
- Exclusive commercial operating system brings excellent interactive experience
- 6000mAh high volume battery ensures 72 hours operation
- Fingerprint module with FBI/STQC certification, listed in PIV Specification, Mobile ID FAP 10 devices, and compliant with international standard including ISO and ANSI support.



Charging Base (default)



Scanner-cradle1 (optional)



Fingerprint Module (optional)

Beijing Wiseasy Technology Co.,Ltd.

ADD: 7th Floor, Block B, Wangxin Mansion, No.28 Xiaoyun Road, Chaoyang District, 100027, Beijing, China.
EMAIL: mk@wiseasy.com WEB: www.wiseasy.com

Follow us on:





More Than Smart

- Android OS
- Large touch screen
- Large volume battery
- Excellent user experience



Industrial Design Award

- German Redot Dot Award 2016
- German iF Design Award 2017



All-In-One Payment

- Magnetic card reader
- IC card reader
- NFC card reader
- Internet/Mobile payment

WISEASY P3 Specifications

Items	Specification
Operation System	Android 5.1/8.1 WiseOS
CPU	Qualcomm Quad-core
Memory	1GB DDR3, 8GB Flash Optional: 2+16GB
Display	5.5 inch, Resolution: 1280×720
Screen	High Sensitivity Capacitive Touch Screen
Camera	Rear camera: 5 Mega Pixel Auto Focus Optional: Front Camera: 2 Mega Pixel, FF Support High- speed Scanning Algorithm
Communication	2G: GSM/EDGE 850/900/1800/1900 3G: WCDMA Band 1/2/5/8 4G: FDD Band 1/2/3/5/7/8; TDD Band: 38/39/40/41(Optional)
WIFI	Support 2.4G/5G, a/b/g/n
Bluetooth	BT 4.0+BLE
GPS	Support: GPS/A-GPS, GLONASS, BEIDOU
NFC	ISO/IEC 14443 Type A&B, Felica, Mifare
IC Card Reader	ISO/IEC 7816, Conform to EMV L1/L2
Magnetic Card Reader	ISO/IEC 7816, Track 1/2/3, Bi-directional
Printer	Thermal Printer, Paper: 58×40mm
Indicator	4 Independent POS Indicators
Buzzer	Support

Items	Specification
Memory Extension	Micro SD/TF, 64GB
USB Port	Micro USB, OTG Supported
Card Slot	1 x SIM + 2 x PSAM, Optional: 2 x SIM + 1 x PSAM (SAM1 also support SIM Card function)
Keys	Power Key, Paper Feeding Key; Touch Key: MENU/HOME/BACK Keys
Battery	6000mAh
Power	Input: 100-240V, 50/60Hz 0.35A Output: 5V/2000mA
Dimensions	211.7×83×64.8 mm
Weight	514g
Accessories	5V/2A Adaptor, USB Cable, Charging Cradle
Temperature	Storage temperature: -35°C to 70°C Operating temperature: -10°C to 55°C Humidity: ≤95%
Certifications	EMV Contact L1 / EMV Contactless L1 2.6b / EMV Contact L2 / VISA / MASTERCARD / AMEX DISCOVER / JCB / PURE / PCI / TQM Unionpay-International / MIR / RuPay / Brazil ABECS Nigeria ARCA Bank / Indonesia NSICC / China UnionPay UPTS / State secret certification GSMA / EU CE / India BIS / Brazil Anatel / Indonesia SDPPI / Egypt VOC / Mexico NOM / Japan MIC&JETA / China CCC / SRC

Fingerprint Module Specifications

WISEASY P3 F1

Items	Specification
Capture Mode	Capacitive Touch
Platen Size	19.7x14.5 mm
Sensing Area	18.0x12.8 mm
Fingerprint Image Size	256x360 pixel
Image Resolution	508 dpi

Items	Specification
Gray level	256 level
Communication Interface	UART (TTL 115200bps default), USB1.1/2.0 SPI
ESD	Contact: ± 6KV Air: ± 8KV
Work Current	50mA
Certifications	FBI, STQC

WISEASY P3 F2

Items	Specification
Active sensing area in	11.9 x 16.9 mm
Fingerprint Image Size	180 x 256 pixel
Resolution	385 ppi (pixel size 66 μm x 66 μm)
Gray scale levels	256 level

Items	Specification
Image scan time	0.53s
Scan mode current draw	90 mA (typical)
ESD protection	±8 kV contact discharge, ±15 kV air discharge per IEC 61000-4-2
UV light resistance	ASTM D-4329-5, cycle A
Certifications	STQC, CE, FCC, RoHS, and WEEE

WISEASY P3 F3

Items	Specification
Active sensing area in	11.9 x 16.9 mm
Fingerprint Image Size	180 x 256 pixel
Optical equivalent resolution	500 dpi (demonstrated per PIV test)
Gray scale levels	256 level

Items	Specification
Image scan time	0.53s
Finger detection	Hardware-assisted, low power
Scan current consumption	< 100 mA (typical)
ESD protection	±8 kV contact discharge, ±15 kV air discharge, according to IEC 61000-4-2
Sensor designed to enable	CE, FCC, RoHS, WEEE